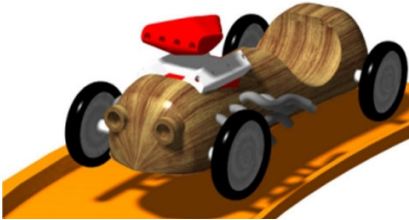


Northern Lights District District Pinewood Derby



March 3rd, 2007
Brookdale Mall

This is it! The Northern Lights District Pinewood Derby Race!

Each pack may send one boy (**preferably the winner**) from each age group (**Tiger Cub, Wolf, Bear, first year Webelos, and second year Webelos**) to race.

Each boy will be responsible for the \$3.00 entry fee.

- All cars will have to pass inspection (regulation size & weight are same as in the kits).
- Profile of the wheels must not be changed in any way (i.e. rounding or narrowing).
- Please do not bring graphite into the building and make sure that your cars are clean before entering the building.
- The decision of the judges on all disqualifications is final.
- Remember that this is the boy's race **not the** adults and we will have **fun!**

The schedule for each age group is as follows:

	Registration	Racing
Tiger Cubs	12:15 – 12:30	12:30 – 1:00
Wolves	1:00 – 1:15	1:15 – 1:45
Bears	1:45 – 2:00	2:00 – 2:30
Webelos (1)	2:30 – 2:45	2:45 – 3:15
Webelos (2)	3:15 – 3:30	3:30 – 4:00

Please be on time for your race! We **cannot** wait for late arrivals! For questions, call Johnny Allen Jr. at (763) 231-7227 or Brian Jones at (763) 537-7682. A district display table will be setup with information on Cub Scout activities throughout the district.

Northern Lights District Pinewood Derby Rules

Specifications:

1. All racers are expected to be in **UNIFORM**.
2. Complete Derby Kit #1622 **must** be used at the District Race. **The ONLY MATERIAL** that are not in the Official Grand Prix Pinewood derby Kit supplied by BSA that are permitted are racing specifications items #3 – “*Weight*” and #6 – “*Details*”. Among other things this rule means that the **OFFICIAL WHEELS AND AXLES MUST BE USED**. No other after market parts allowed. **NO EXCEPTIONS!**
3. **GRAPHITE** (or other lubrications) **WILL BE PERMITTED AT THE DISTRICT CHAMPIONSHIP**. The institution providing us with a location for our race does NOT want graphite smudges, etc... Therefore, the “*DIRT TEST*”. All cars will be placed on a white surface and each end individually lifted 1 inch and tapped to remove excess lubrications.
4. **No lubricant containers of any type will be allowed in the building. (DO YOUR LUBRICATING AT HOME!!!)**

Other Reasons for DISQUALIFICATION:

1. Exception of any of the specifications (listed on the kit information sheet under “*Racing Specifications*”). A drill will be provided to bring weight within specs.
2. UnScoutlike conduct of participants, such as combative behavior, is not permitted. (*Body English, whistling, yelling and groaning ARE permitted*).
3. Presence of non-participants (parents, brothers, sisters, etc...) in the racing area. Only the Cub Scouts participating and the Official Race Committee Members will be permitted in the race area.

***** HERE ARE THE “OFFICIAL RACING SPECIFICATIONS” *****

1. **Width:** Overall width shall not exceed 2 ¾ inches.
2. **Length:** Overall length shall not exceed 7 inches.
3. **Height:** Overall height shall not exceed 2 5/8 inches (to go under electronic finish).
4. **Weight:** Weight shall not exceed 5 ounces. All cars weighted by the District Scale. No loose materials of any kind are permitted in the car. The car may be hollowed out and built up to the maximum weight by addition of wood
– metal – plastic provided it is securely build into the body.
5. **Axle Grooves:** Original Axle grooves must be used. No altering the wheelbase.
6. **Wheels/Bearings:** Wheels & plated pins (axels) of the type supplied in the Official Car Kit MUST be used. NO SUBSTITUTIONS.
Washer and bushing are prohibited. NO changes to the shape of the wheel are allowed EXCEPT removal of the
sea as shown in the instructions in the kit. This means no tapering, grooving, grinding, ridging or turning down
etc...
7. **Springing:** The car shall not ride in any type of springs.
8. **Details:** Details such as steering wheel, driver, decals, painting, interior details are permissible as long as those details do not exceed the maximum length, width, & weight specifications.
9. **Attachments:** The car must be freewheeling with no starting devices.
10. **Inspection:** Each car must pass inspection by the Official Inspection Committee before it may compete. The Inspectors have the right to disqualify cars that do not meet these specifications.

Please, NO cars from previous years may race this year.

THE DECISIONS OF THE DISTRICT RACE COMMITTEE ARE FINAL