



# NORTHERN LIGHTS DISTRICT FISHING DERBY

## January 30th, 2010 on Medicine Lake

West side of Medicine Lake off West Medicine Lake Drive

Take Highway 55 – see map on back

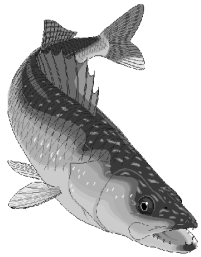


**Check-in at 9:30am**

**Fishing from 10:00-1:00pm**

- There is no parking on the ice by order of the Hennepin County Sheriff's Department. There are two public parking lots on the west side. Even with these lots, parking will be limited so please car pool if possible. Do not park on public roads.

- Food will be available for a small fee.



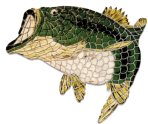
- Please do not litter! This includes cigarette butts. We ask that you do not smoke in the presence of the boys.
- Dress warmly! Please wear the correct clothes for a cold outdoor event. Overdress, you can always remove layers.
- Due to the large number of participants, please do not bring portable fish-

houses.

- Wax worms and minnows will be provided. If you want other bait, bring it.

### **Note Location**

West side of Medicine Lake off West Medicine Lake Drive; Take Highway 55, See Map on Back.




**NO ATHLETIC SHOES ON THE ICE**



ALL MINNESOTA FISHING RULES AND REGULATIONS WILL BE FOLLOWED

Make Checks Payable to Northern Star Council & Mail to  
Northern Star Council, 5300 Glenwood Avenue  
Golden Valley, MN 55422

**PACK #** \_\_\_\_\_

# \_\_\_\_\_ of Scouts (Leaders) @ \$5.00 per person (includes a patch) \$ \_\_\_\_\_ 

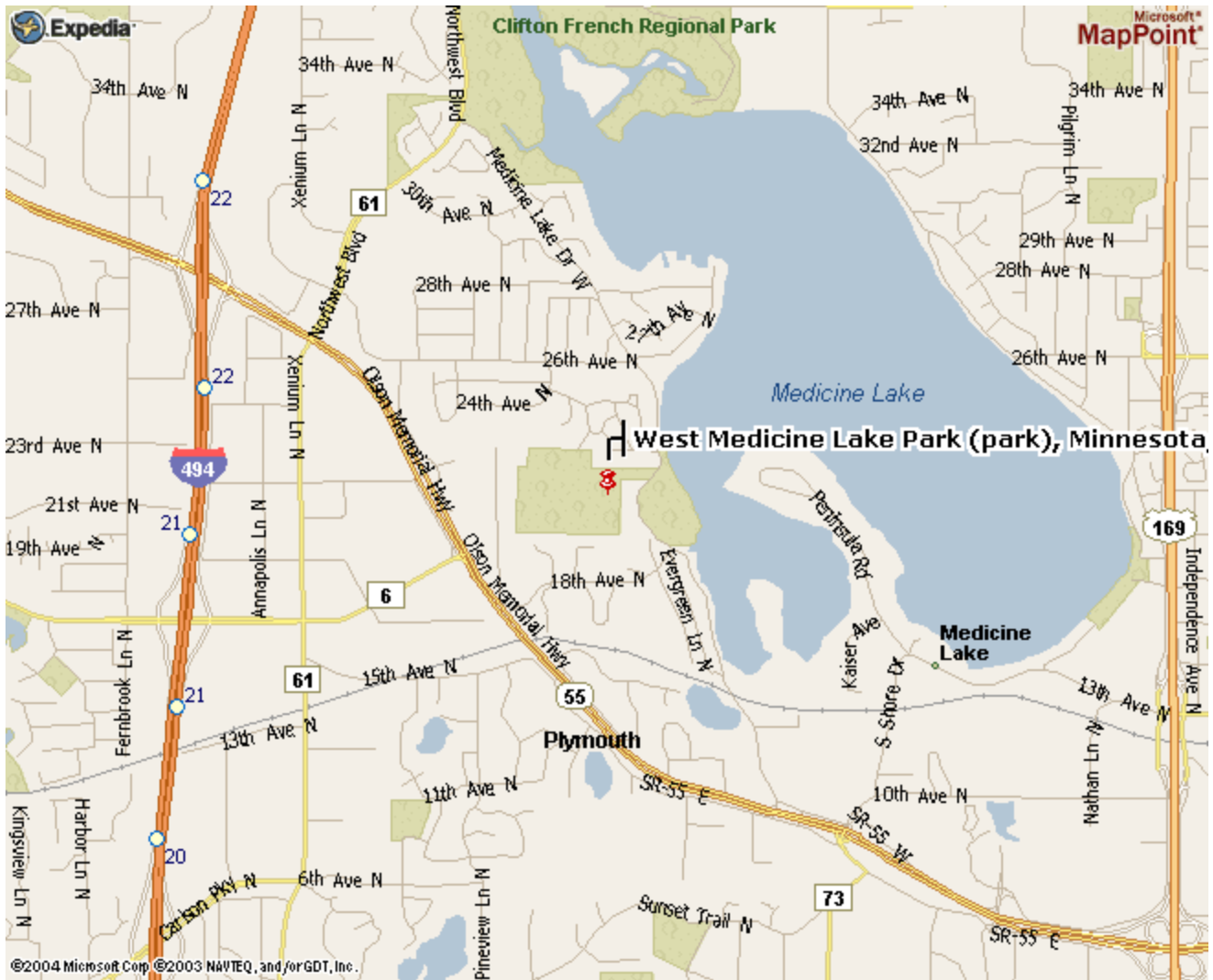
# \_\_\_\_\_ of Family / Others @ \$2.00 per person \$ \_\_\_\_\_

Total Payment \$ \_\_\_\_\_

Code 158

Scout Attendees (If you have more Scouts please attach an additional sheet of paper.)





## West Medicine Lake Park

Parking Lots North of 18<sup>th</sup> Avenue North, Two Parking Lots

NO PARKING ON STREETS